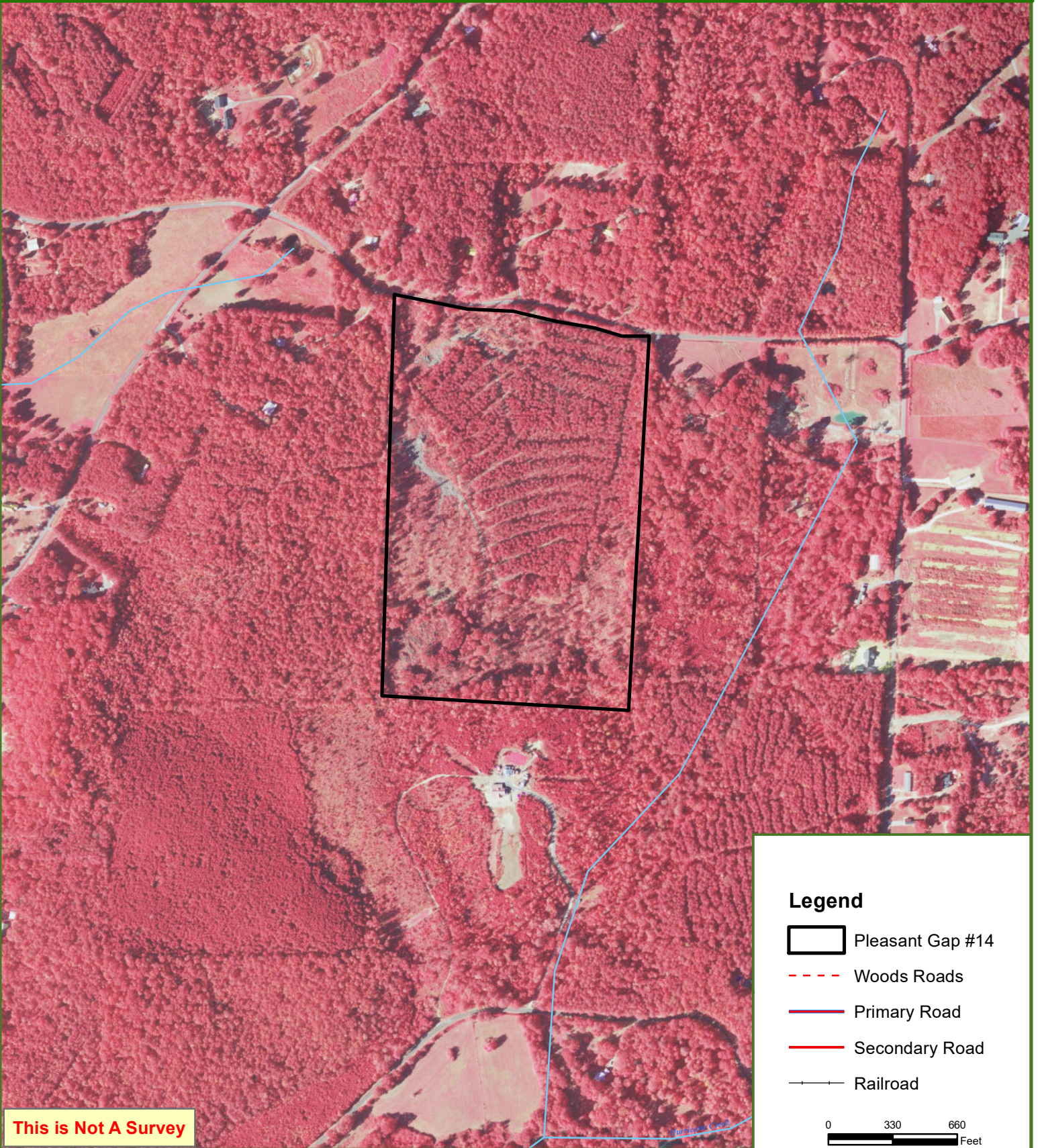




# Pleasant Gap #14






## Cherokee County, AL

59.00 ± Acres



**This is Not A Survey**

### Legend

-  Pleasant Gap #14
-  Woods Roads
-  Primary Road
-  Secondary Road
-  Railroad



This map was produced from information supplied by the seller and the use of aerial photography. The boundary lines portrayed on this map are approximate and could be different than the actual location of the boundaries found in the field.