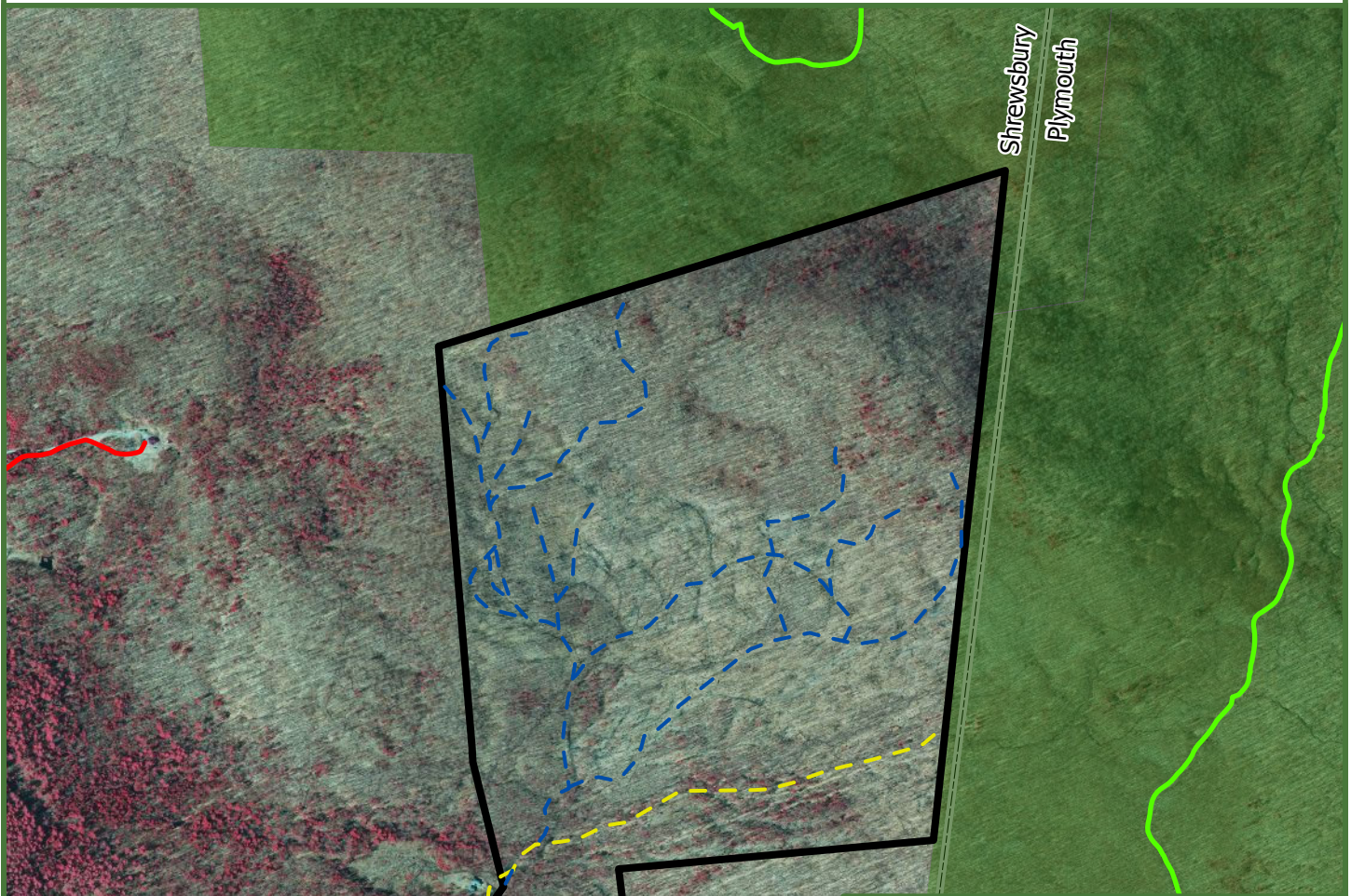




Coolidge Range Forest

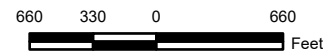
+/- 223 Acres

Shrewsbury, Rutland County, Vermont



Legend

- Coolidge Range Forest
- Interstate Highways
- US Highway
- State Highways
- Town Roads
- VAST Trails
- Access Road
- Abandoned VAST / Walking Trail
- Skid Trail
- Excluded from UVA
- Public Land
- Conserved Land
- Town Lines



This is Not A Survey

Map produced from the best available information including VCGI town tax maps polygon, hand held GPS data, aerial photography and reference information obtained from publicly available GIS sources. Boundary lines portrayed on this map are approximate and could be different than the actual location of boundaries found in the field. Map is not a survey.