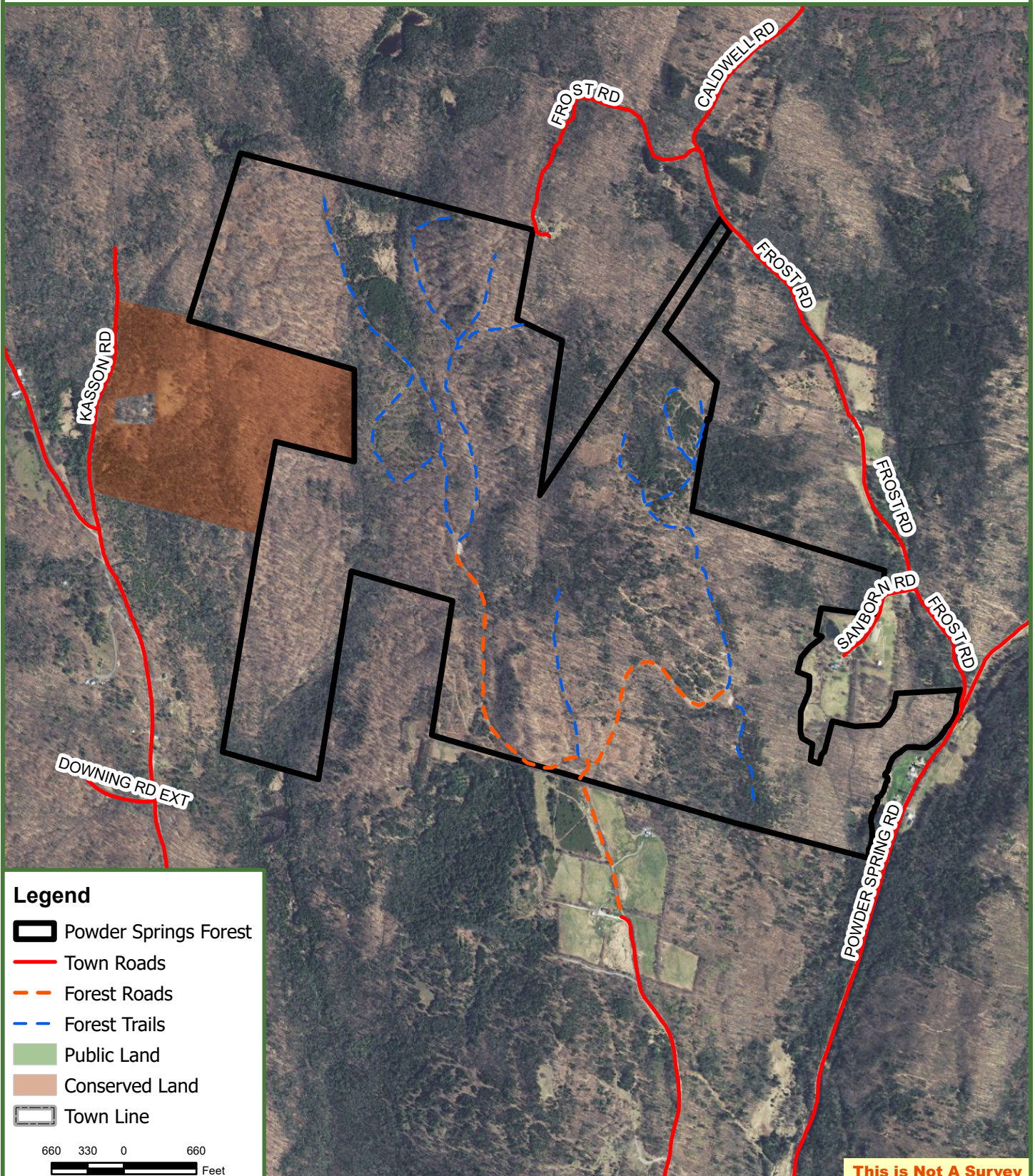




Powder Springs Forest

515.84 Tax Acres

Topsham, Orange County, Vermont



Legend

- Powder Springs Forest
- Town Roads
- Forest Roads
- Forest Trails
- Public Land
- Conserved Land
- Town Line

660 330 0 660
Feet

This is Not A Survey

Map produced from the best available information including VCGI town tax maps polygon, hand held GPS data, aerial photography and reference information obtained from publicly available GIS sources. Boundary lines portrayed on this map are approximate and could be different than the actual location of boundaries found in the field. Map is not a survey.