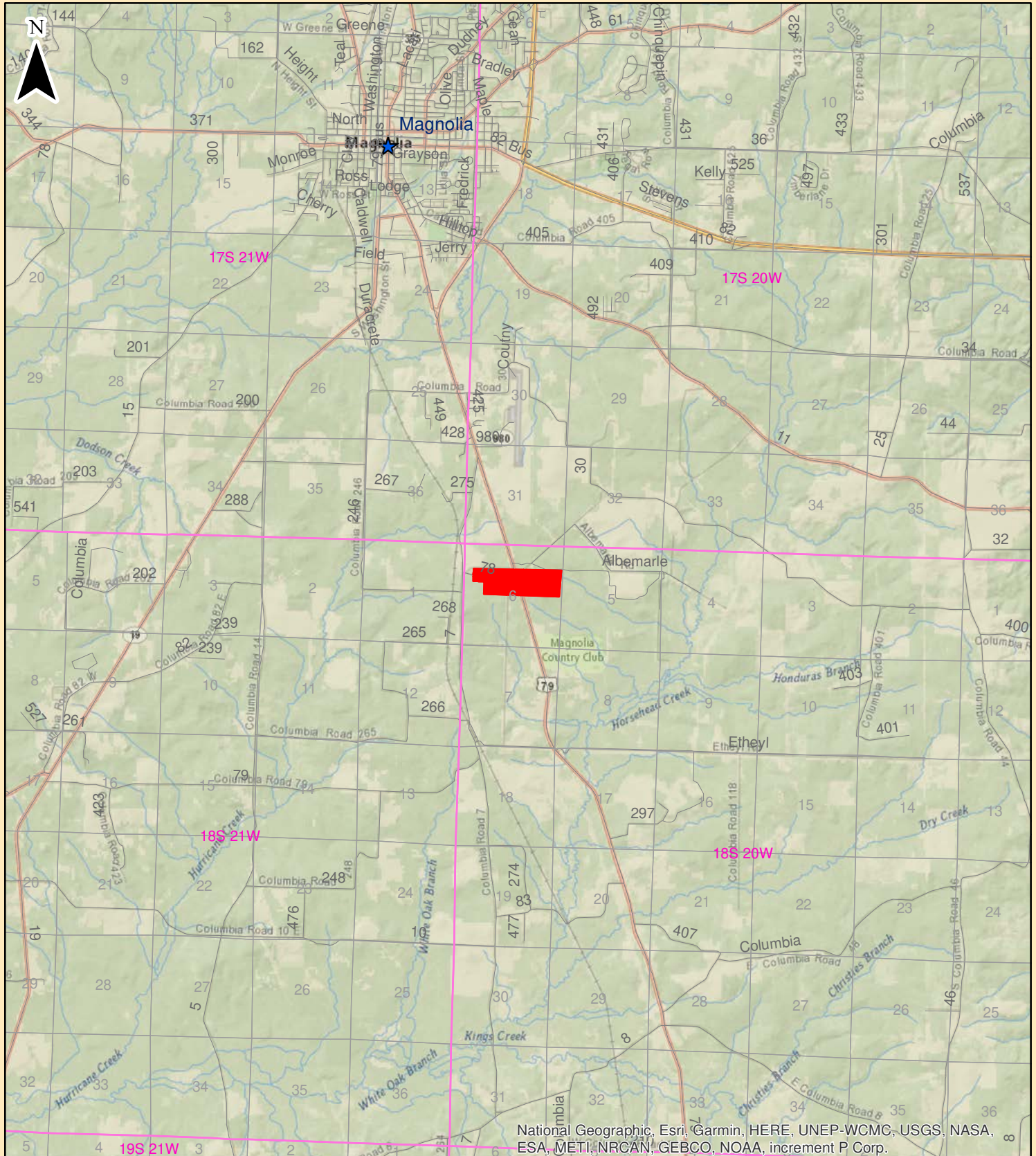
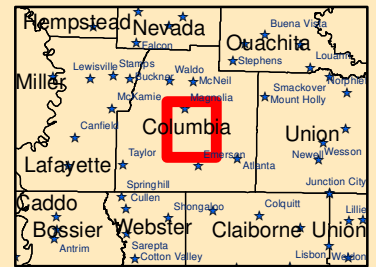


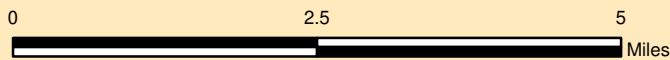


**Fountains
Land**
AN F&W COMPANY

Steel Mill
+/- 132 ac. Columbia
County, AR Sec. 6,
T18S, R20W



National Geographic, Esri, Garmin, HERE, UNEP-WCMC, USGS, NASA, ESA, METI, NRCAN, GEBCO, NOAA, increment P Corp.



Mapper: TFRANKS
Stand Date:

F&W Forestry Services, Inc.