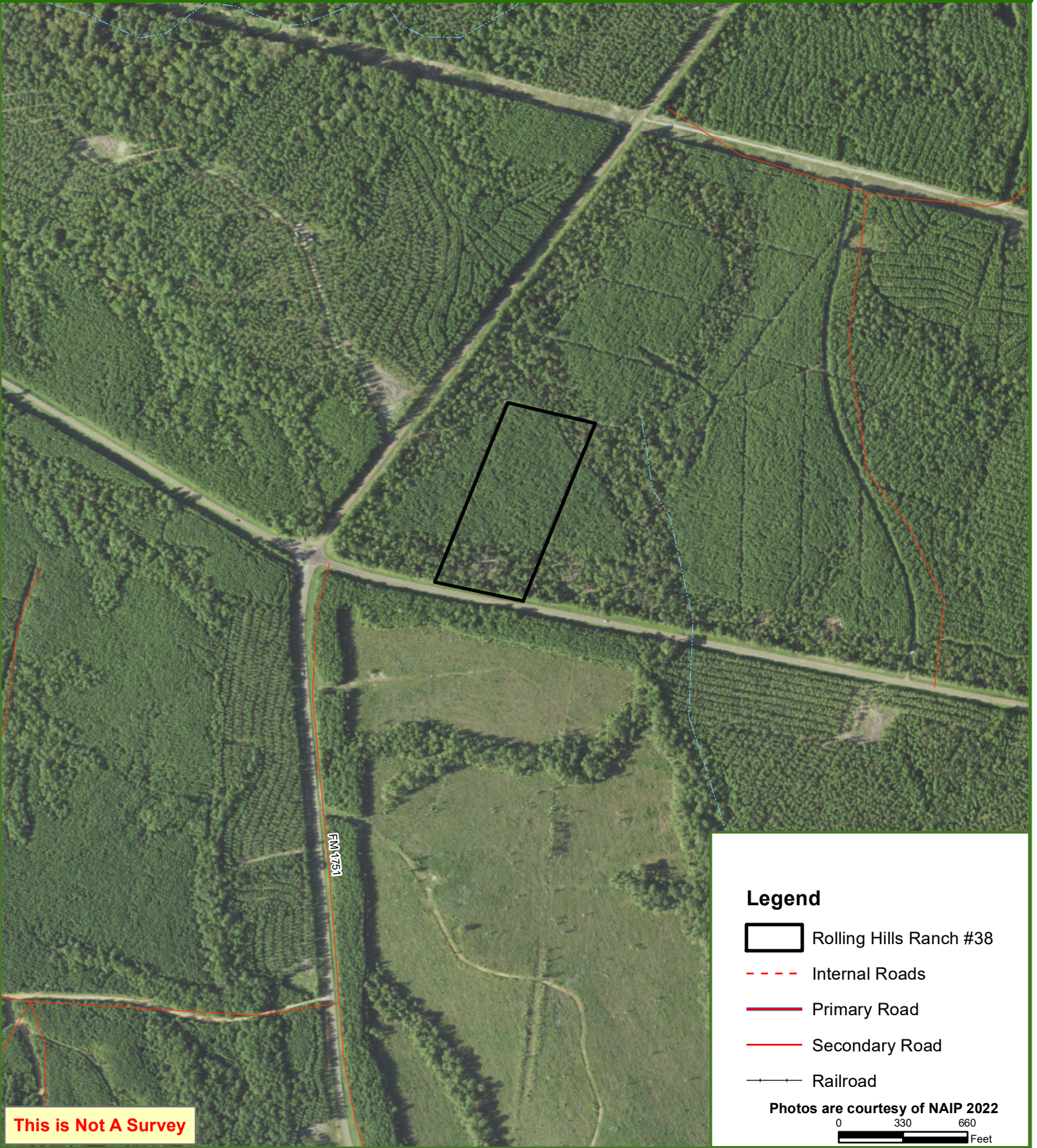




Rolling Hills Ranch #38 Tract






San Augustine County, TX

10.03 ± Acres

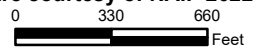


This is Not A Survey

Legend

-  Rolling Hills Ranch #38
-  Internal Roads
-  Primary Road
-  Secondary Road
-  Railroad

Photos are courtesy of NAIP 2022



This map was produced from information supplied by the seller and the use of aerial photography. The boundary lines portrayed on this map are approximate and could be different than the actual location of the boundaries found in the field.