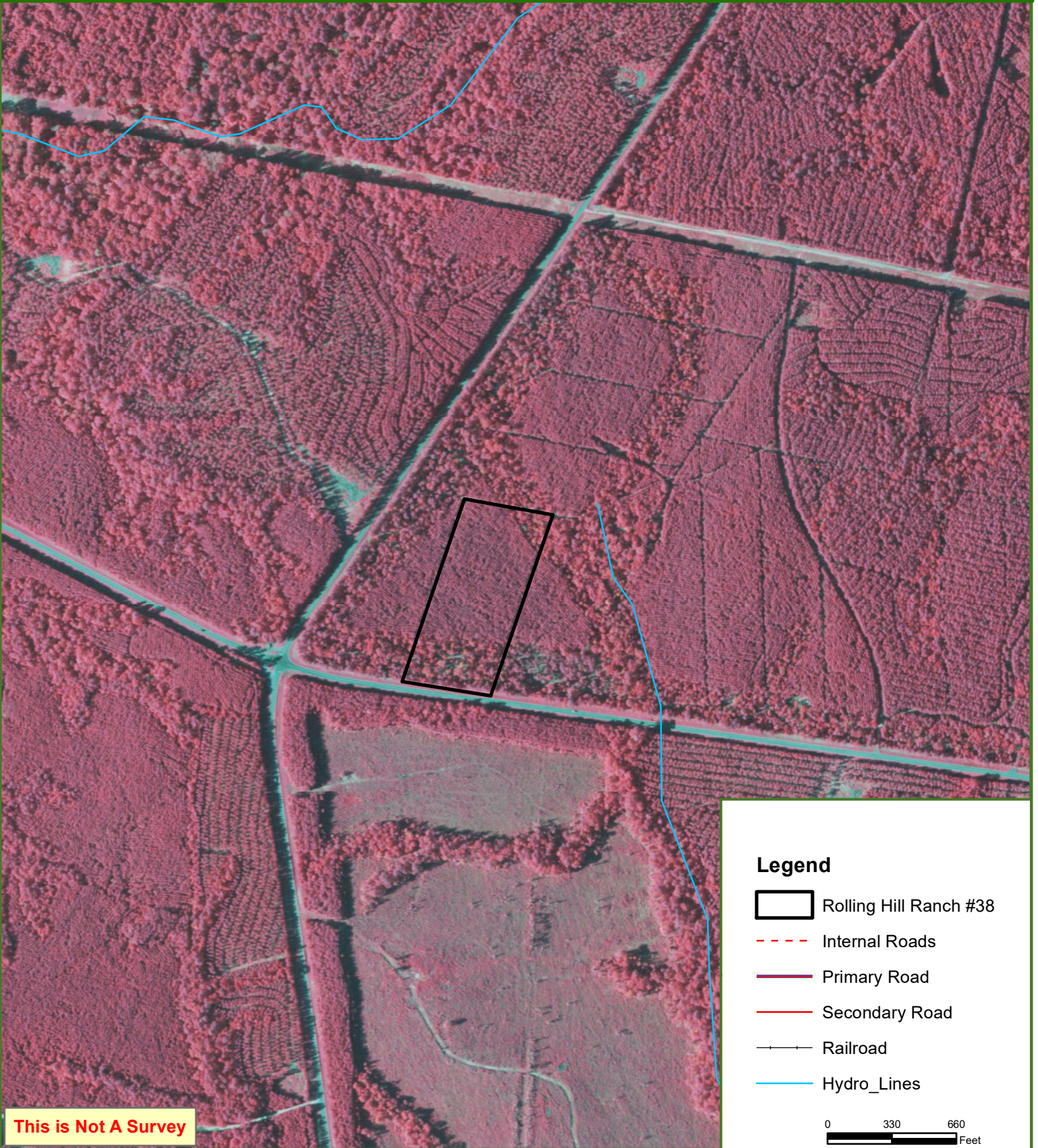








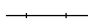

Rolling Hills Ranch #38

San Augustine County, TX

10.03 ± Acres



Legend

-  Rolling Hill Ranch #38
-  Internal Roads
-  Primary Road
-  Secondary Road
-  Railroad
-  Hydro_Lines

0 330 660
Feet

This is Not A Survey

This map was produced from information supplied by the seller and the use of aerial photography. The boundary lines portrayed on this map are approximate and could be different than the actual location of the boundaries found in the field.