

POWELL PLANTATION TRACT #2

Powell Plantation Tracts offers 3 individual tracts offering endless possibilities to build an off the grid homestead or watch your forest investment grow in Panola County, Texas.



+/- 13.7 Acres
DeBerry, Panola County, Texas

Price: \$82,460

LOCATION

Located between Carthage, TX and Shreveport, LA, the Powell Plantation Tracts sit squarely in the heart of the East Texas Pineywoods.

Toledo Bend Reservoir, Lake Murvaul, the Sabine River, Shreveport, LA and Nacogdoches, TX are all within an hour commute.

ACCESS

With county road frontage to CR 307 just off HWY 1794, commuting to the tracts is a breeze.

Directions to the property: From DeBerry, TX, Take HWY 1794 west 5 miles to CR 307. Turn south of CR 307. The entrance to the property is in 0.6 miles.



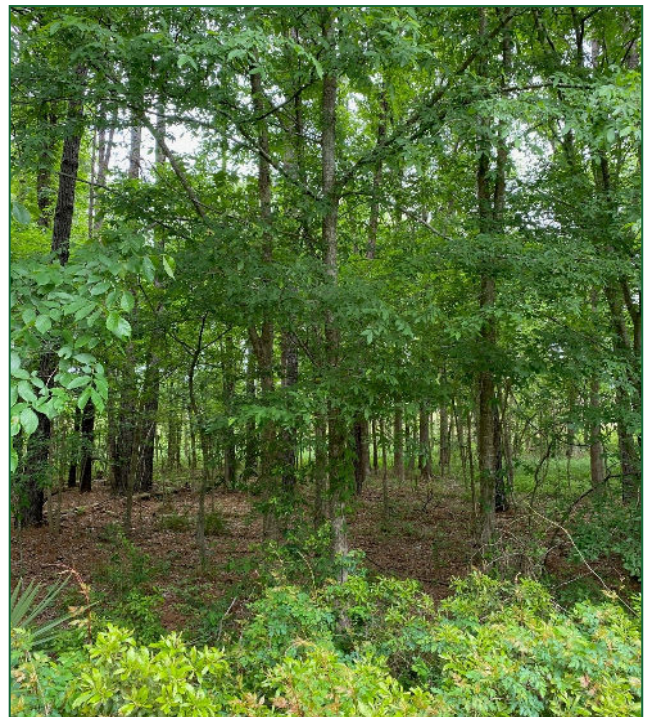
County Road 307 running through the property.

SITE DESCRIPTION

The Powell Plantation Tracts offer multiple residential and recreational size timber tracts ranging from 13-22 acres. This is a unique opportunity to purchase one tract or a combination of tracts. The tracts offer a total of 52 acres available for purchase.

TIMBER

The majority of the property has recently planted with improved genetics loblolly pine. Site preparation included a chemical herbicide application followed by a prescribed burn to aid in debris decomposition. Tract 3 also contains 8 acres of natural hardwood bottom great for hunting and wildlife viewing.



The Powell Plantation Tracts features natural mixed pine and hardwoods.

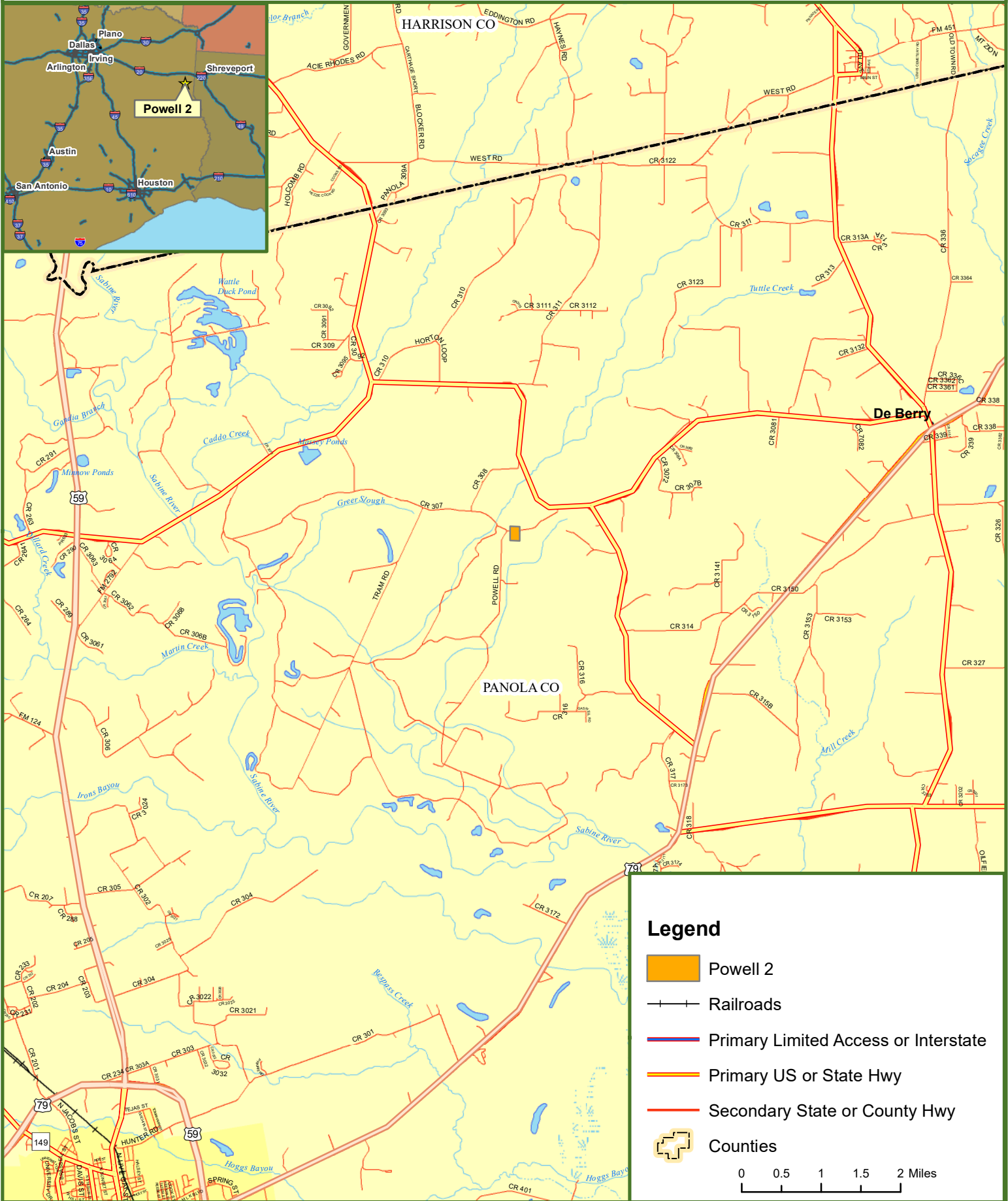
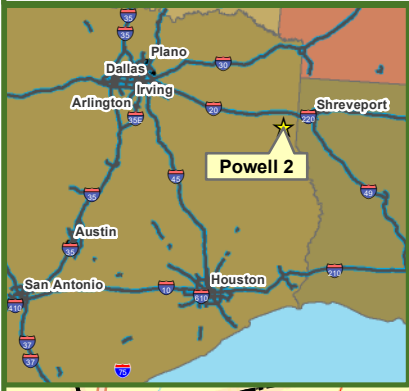
All Tracts Available			
Tract	County	Acres +/-	List Price
Tract #1	Panola	15.4	\$92,340
Tract #2	Panola	13.7	\$82,460
Tract #3	Panola	22.7	\$136,447

Fountains Land is the exclusive broker representing the seller's interest in the marketing, negotiating and sale of this property. Fountains has an ethical and legal obligation to show honesty and fairness to the buyer. The buyer may retain brokers to represent their interests. All measurements are given as a guide, and no liability can be accepted for any errors arising therefrom. No responsibility is taken for any other error, omission, or misstatement in these particulars, nor do they constitute an offer or a contract. We do not make or give, whether in these particulars, during negotiations or otherwise, any representation or warranty in relation to the property.


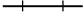




Property inspections shall be done during daylight hours. Seller and Fountains Land in no way make any representations or warranties regarding the conditions of the property, including any and all access routes, and all persons entering upon the property do so at their own risk and accept said property "as-is" in its existing condition during such inspections. All persons entering upon the property assume all risks and liabilities and agree to indemnify, defend, and hold harmless Seller, its affiliates, officers, directors, managers, agents, representatives and employees from and against any and all claims, demands, causes of action, injuries (including death) and damages resulting from any accident, incident, or occurrence arising out of, incidental to or in any way resulting from his or her inspection of the property or his or her exposure to the conditions of the property.

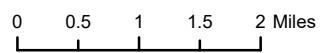


Locus Map Powell 2 Panola County, TX 14 +/- Acres



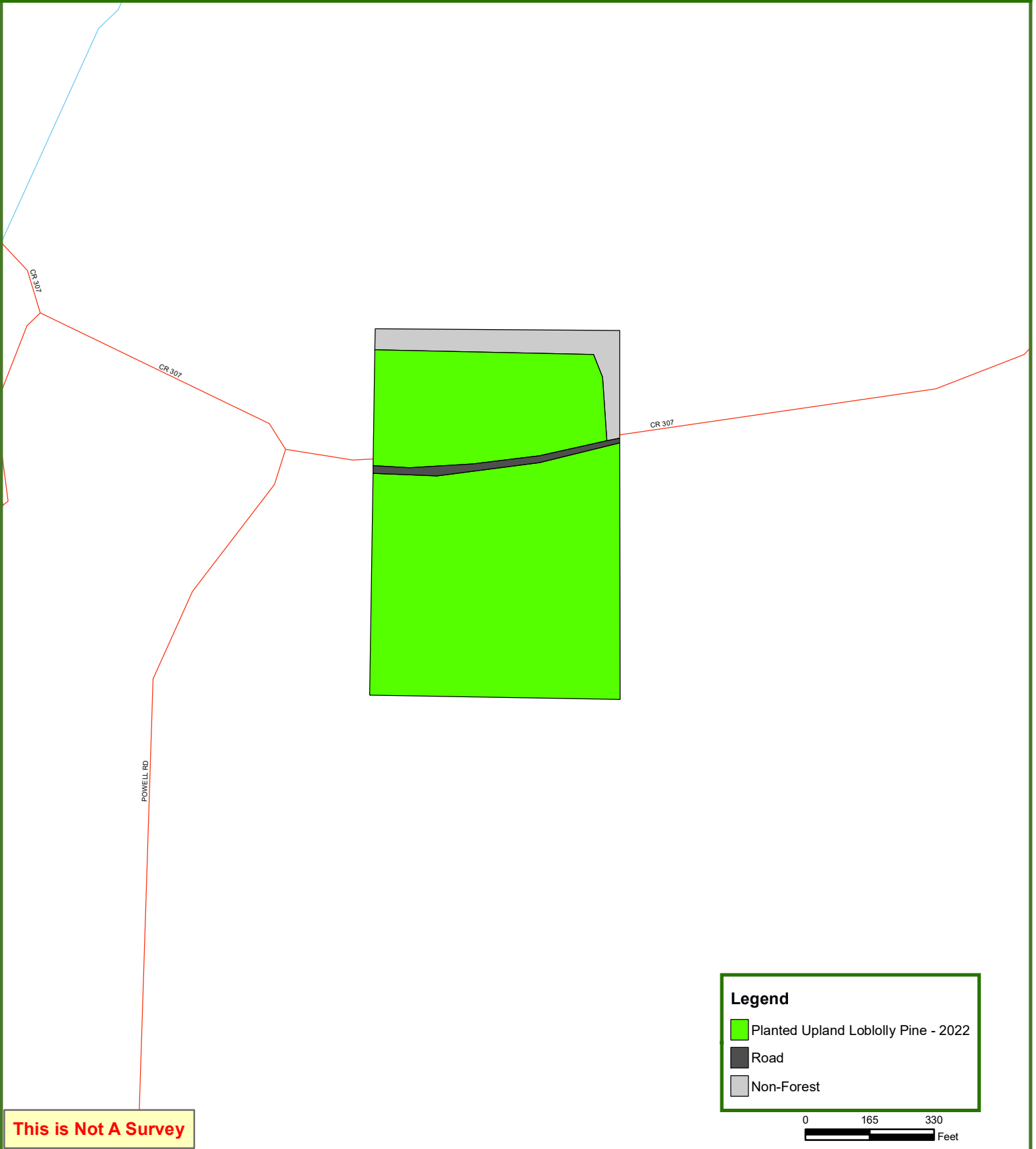
Legend

-  Powell 2
-  Railroads
-  Primary Limited Access or Interstate
-  Primary US or State Hwy
-  Secondary State or County Hwy
-  Counties



Powell 2

14 +/- Acres
Panola County, TX



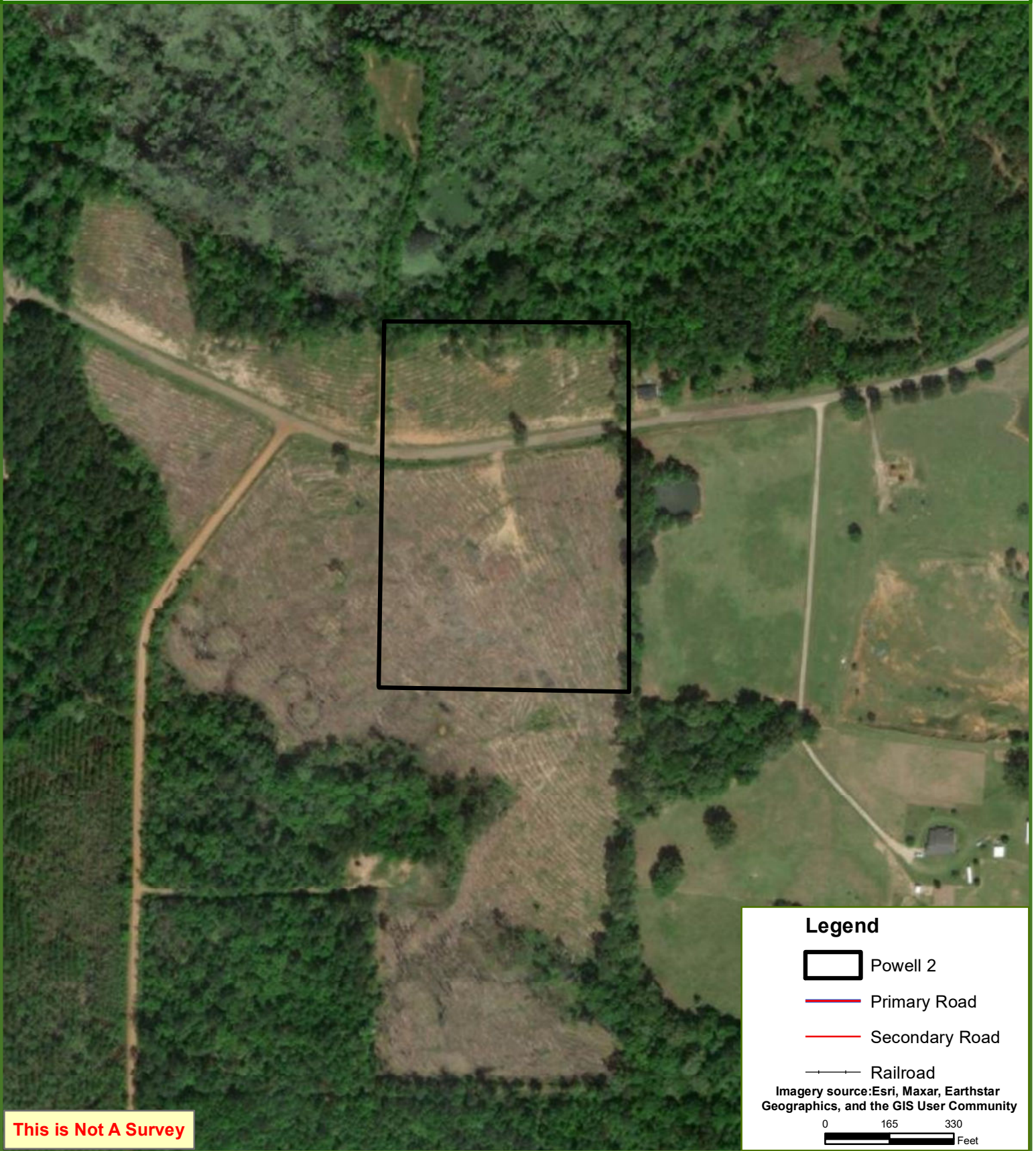
This is Not A Survey

This map was produced from information supplied by the seller and the use of aerial photography. The boundary lines portrayed on this map are approximate and could be different than the actual location of the boundaries found in the field.







Powell 2

14 +/- Acres
Panola County, TX



This is Not A Survey

Legend

-  Powell 2
-  Primary Road
-  Secondary Road
-  Railroad

Imagery source: Esri, Maxar, Earthstar Geographics, and the GIS User Community

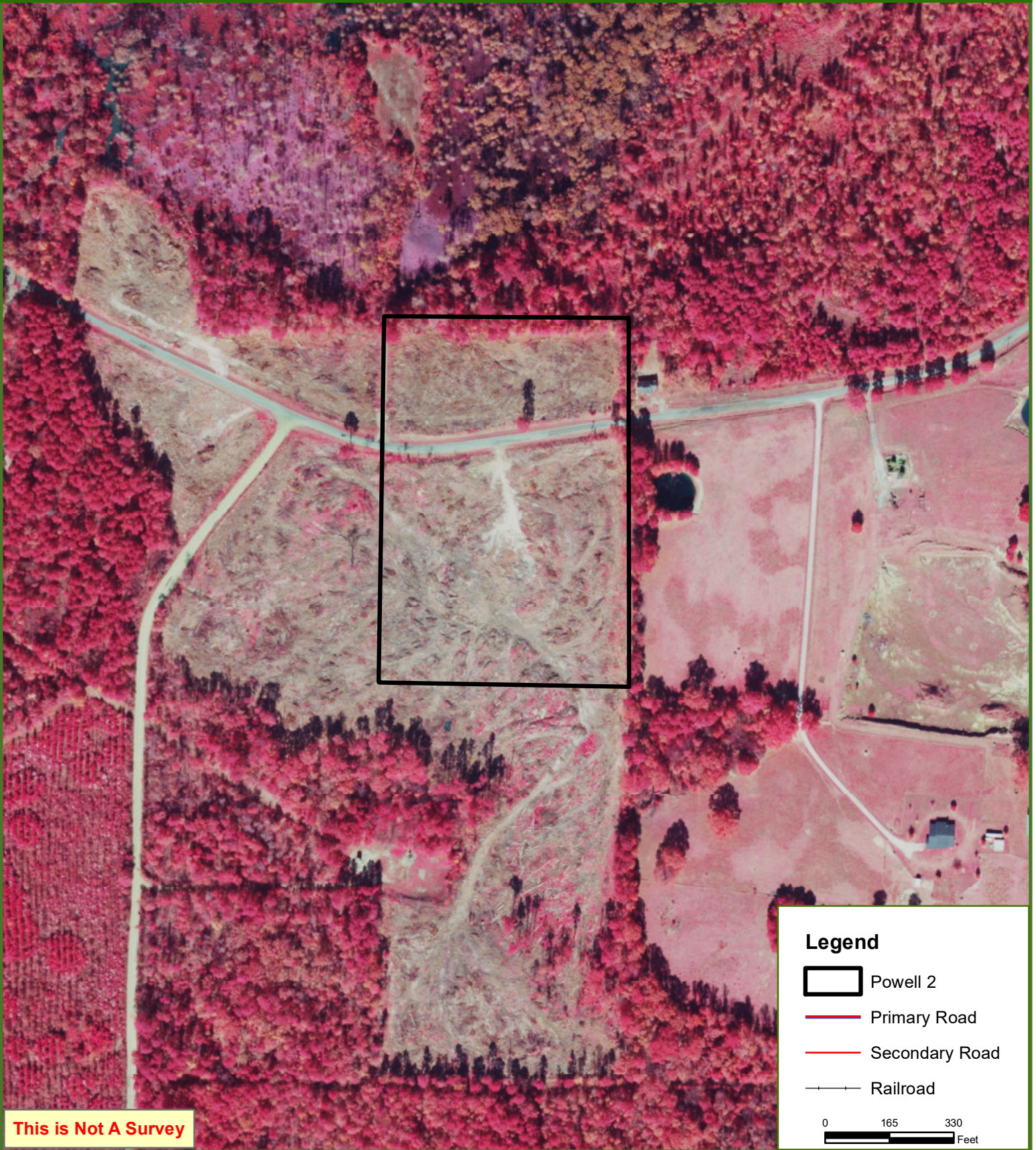
0 165 330
Feet

This map was produced from information supplied by the seller and the use of aerial photography. The boundary lines portrayed on this map are approximate and could be different than the actual location of the boundaries found in the field.



Powell 2

14 +/- Acres
Panola County, TX



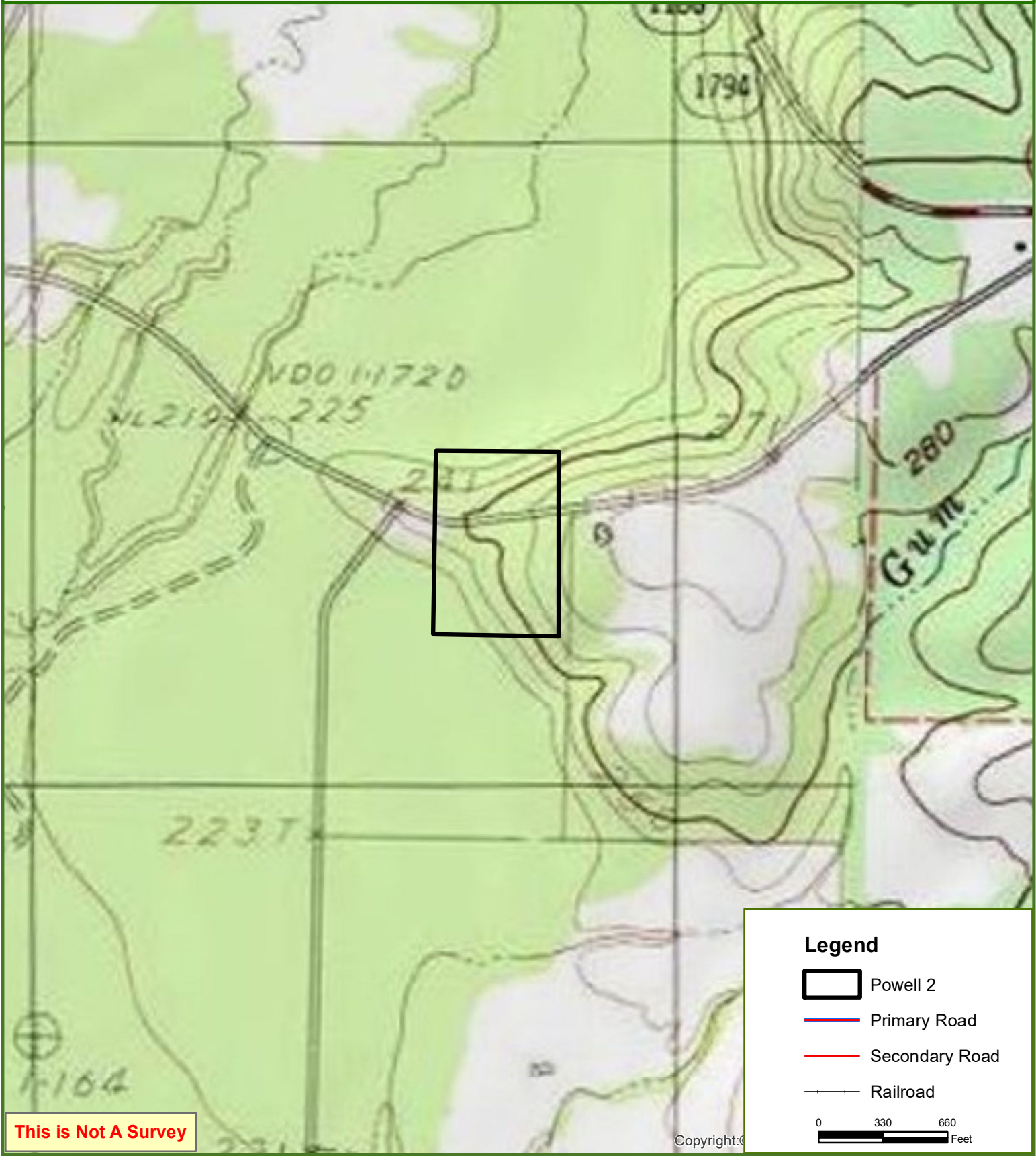
This is Not A Survey

This map was produced from information supplied by the seller and the use of aerial photography. The boundary lines portrayed on this map are approximate and could be different than the actual location of the boundaries found in the field.







Powell 2

14 +/- Acres
Panola County, TX



This is Not A Survey

Legend

-  Powell 2
-  Primary Road
-  Secondary Road
-  Railroad

0 330 660
Feet

This map was produced from information supplied by the seller and the use of aerial photography. The boundary lines portrayed on this map are approximate and could be different than the actual location of the boundaries found in the field.