



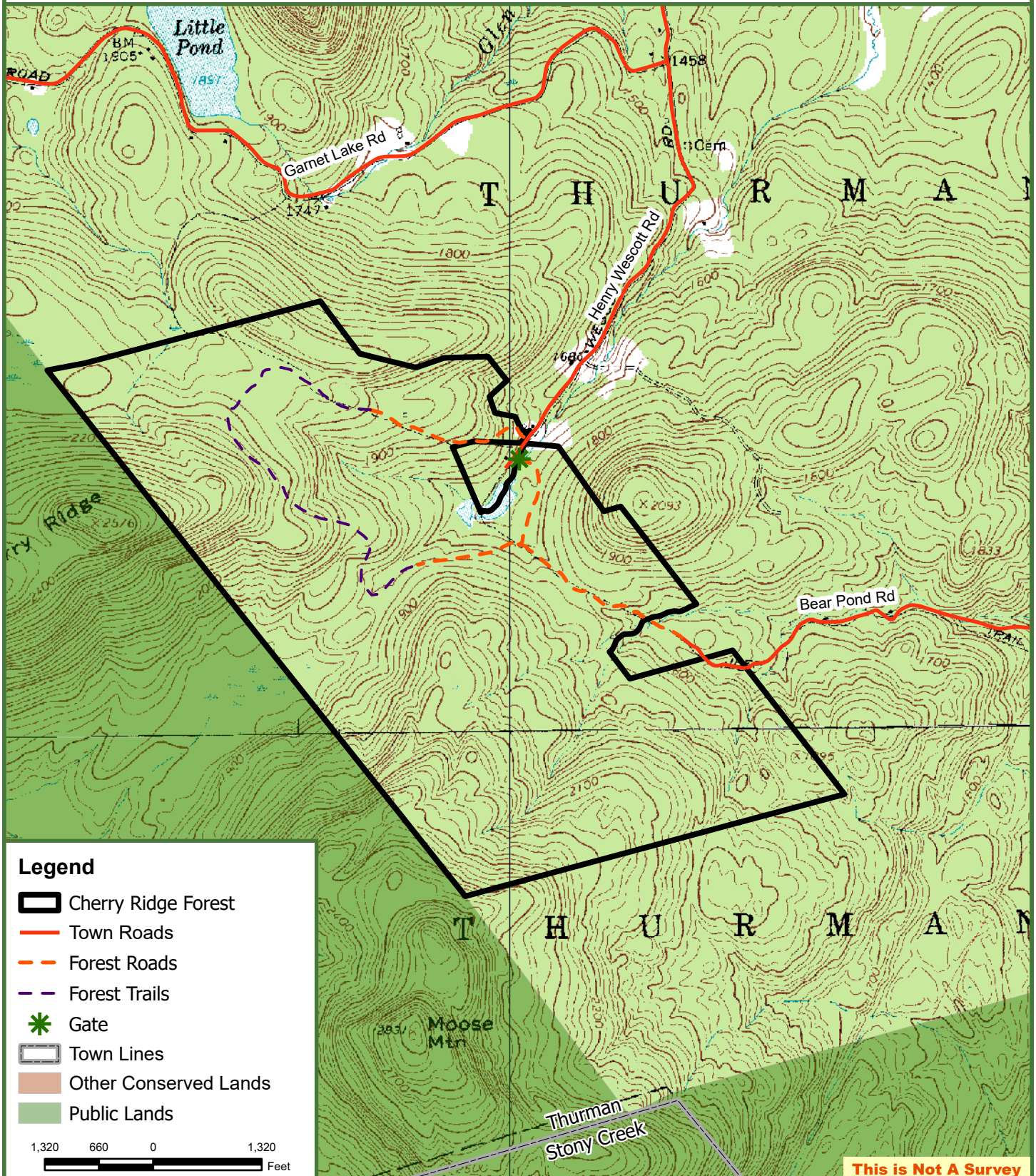
Cherry Ridge Forest

748 GIS Acres (705 Tax Acres)









Thurman, Warren County, NY



**Fountains
Land**
AN F&W COMPANY



Legend

-  Cherry Ridge Forest
-  Town Roads
-  Forest Roads
-  Forest Trails
-  Gate
-  Town Lines
-  Other Conserved Lands
-  Public Lands

1,320 660 0 1,320
Feet

This is Not A Survey

Map produced from the best available information including town tax maps, hand held GPS data, aerial photography and reference information obtained from publicly available GIS sources, and the owner. Boundary lines portrayed on this map are approximate and could be different than the actual location of boundaries found in the field.