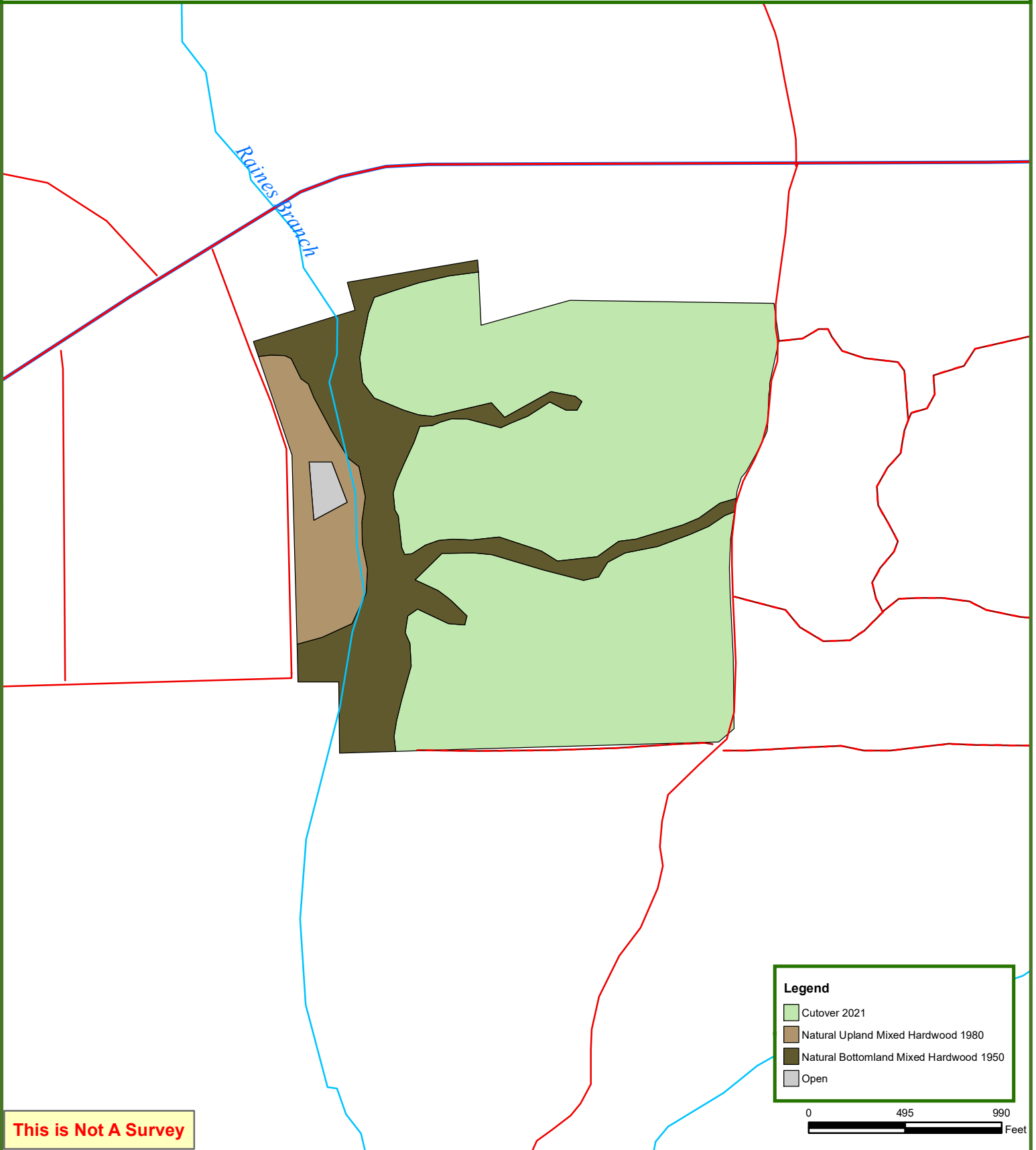




Raines Branch Tract

124 ± Acres

Upson County, GA



This is Not A Survey

Legend

- Cutover 2021
- Natural Upland Mixed Hardwood 1980
- Natural Bottomland Mixed Hardwood 1950
- Open

0 495 990 Feet

This map was produced from information supplied by the seller and the use of aerial photography. The boundary lines portrayed on this map are approximate and could be different than the actual location of the boundaries found in the field.