

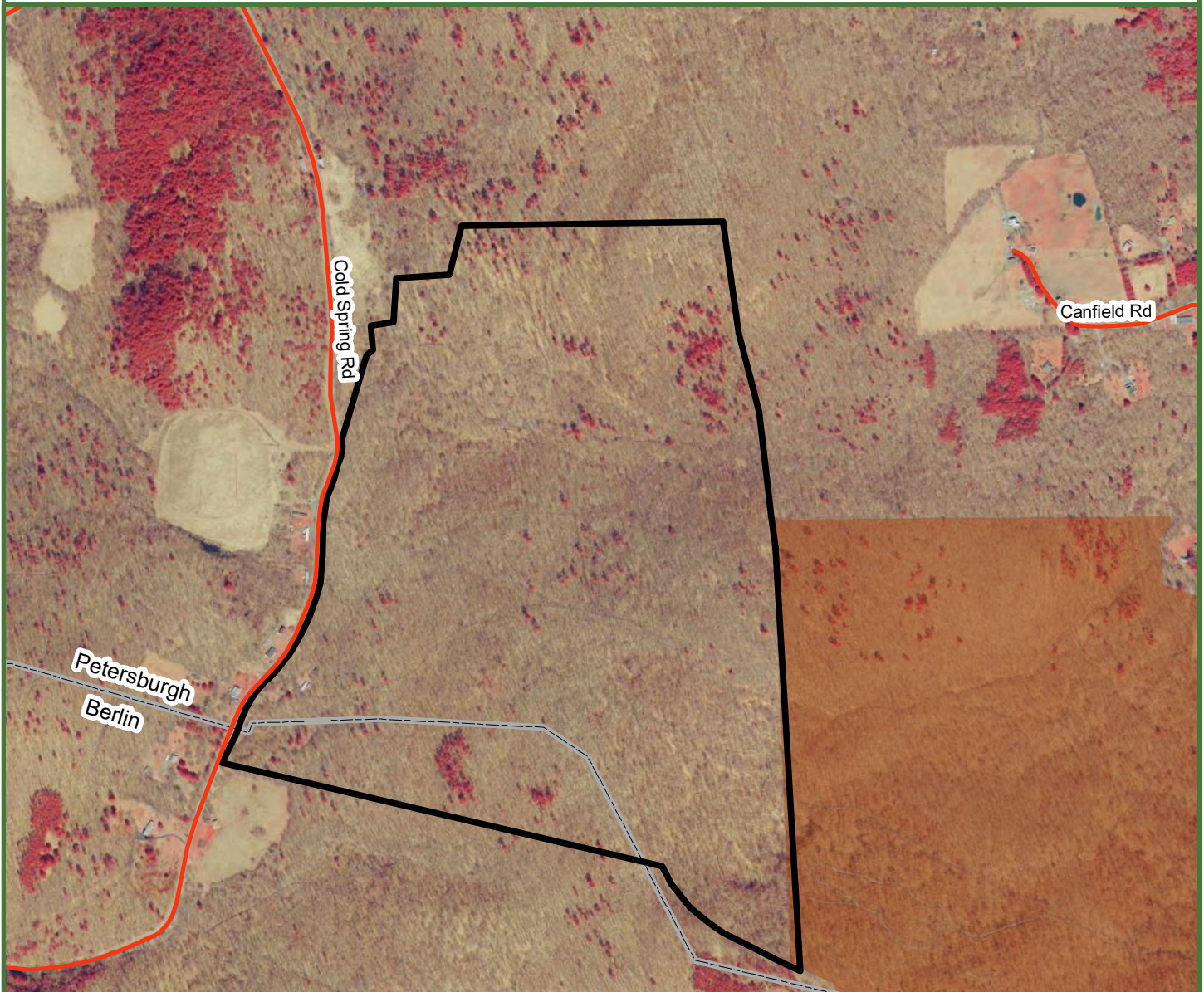


# Petersburgh Forest



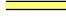





130.1 Deed Acres  
Berlin/Petersburgh, Rensselaer County, NY



**Fountains  
Land**  
AN F&W COMPANY



**Legend**

-  Petersburgh Forest
-  Interstate Highways
-  US Highway
-  State Highways
-  Town Roads
-  Public Lands
-  Other Conserved Lands
-  Town Lines

660 330 0 660  
Feet

**This is Not A Survey**

Map produced from the best available information including town tax maps, hand held GPS data, aerial photography and reference information obtained from publicly available GIS sources, and the owner. Boundary lines portrayed on this map are approximate and could be different than the actual location of boundaries found in the field.