



# Locus Map

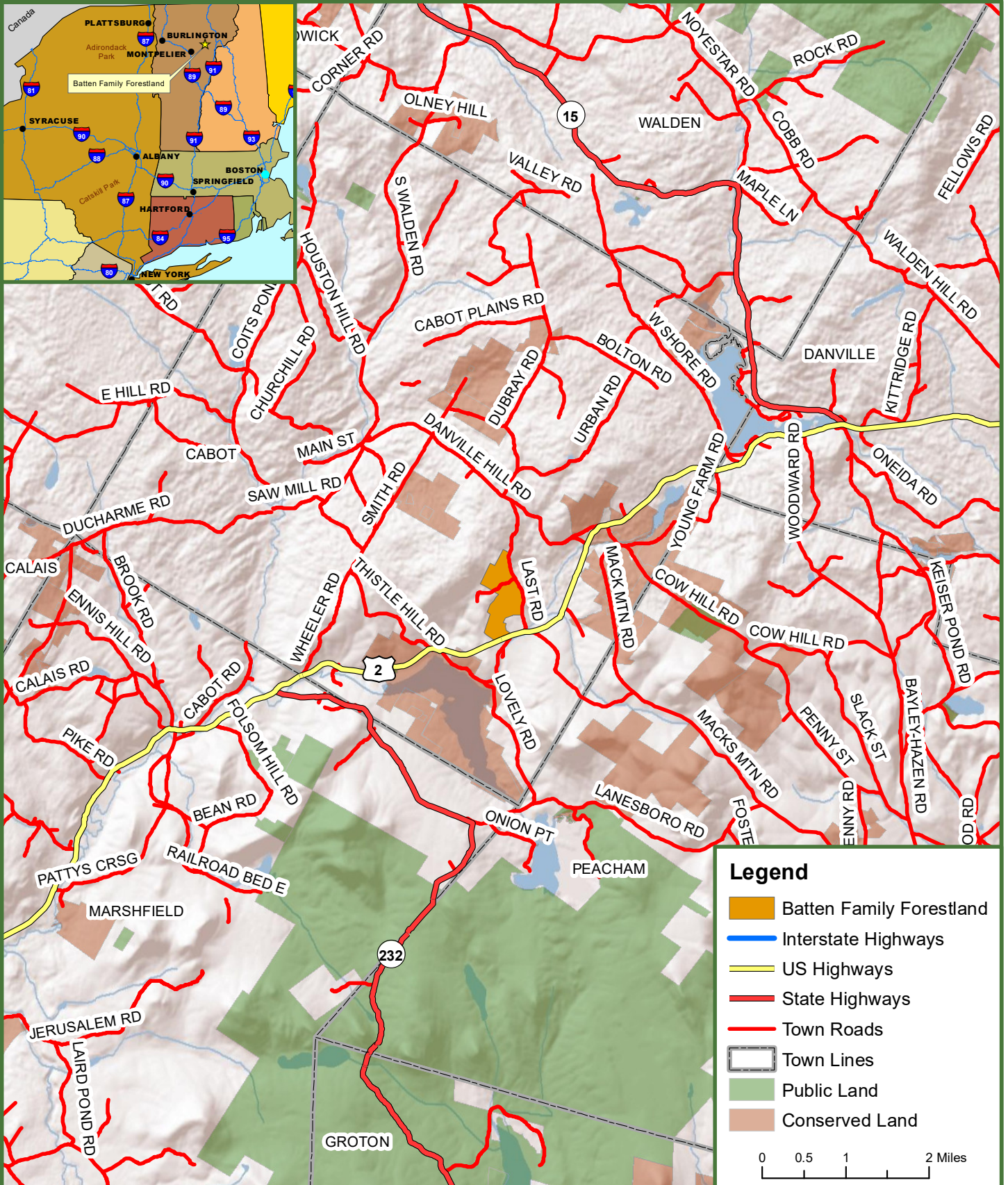
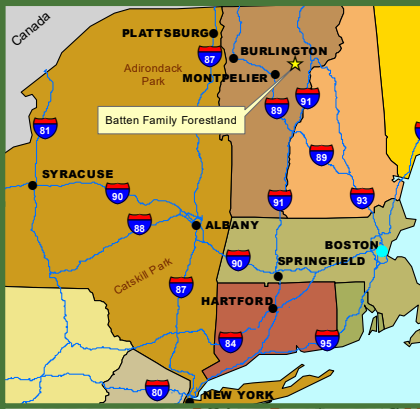
## Batten Family Forestland

203 +/- Tax Acres

### Cabot, Washington County, Vermont



**Fountains Land**  
AN F&W COMPANY



**Legend**

- Batten Family Forestland
- Interstate Highways
- US Highways
- State Highways
- Town Roads
- Town Lines
- Public Land
- Conserved Land

0 0.5 1 2 Miles