

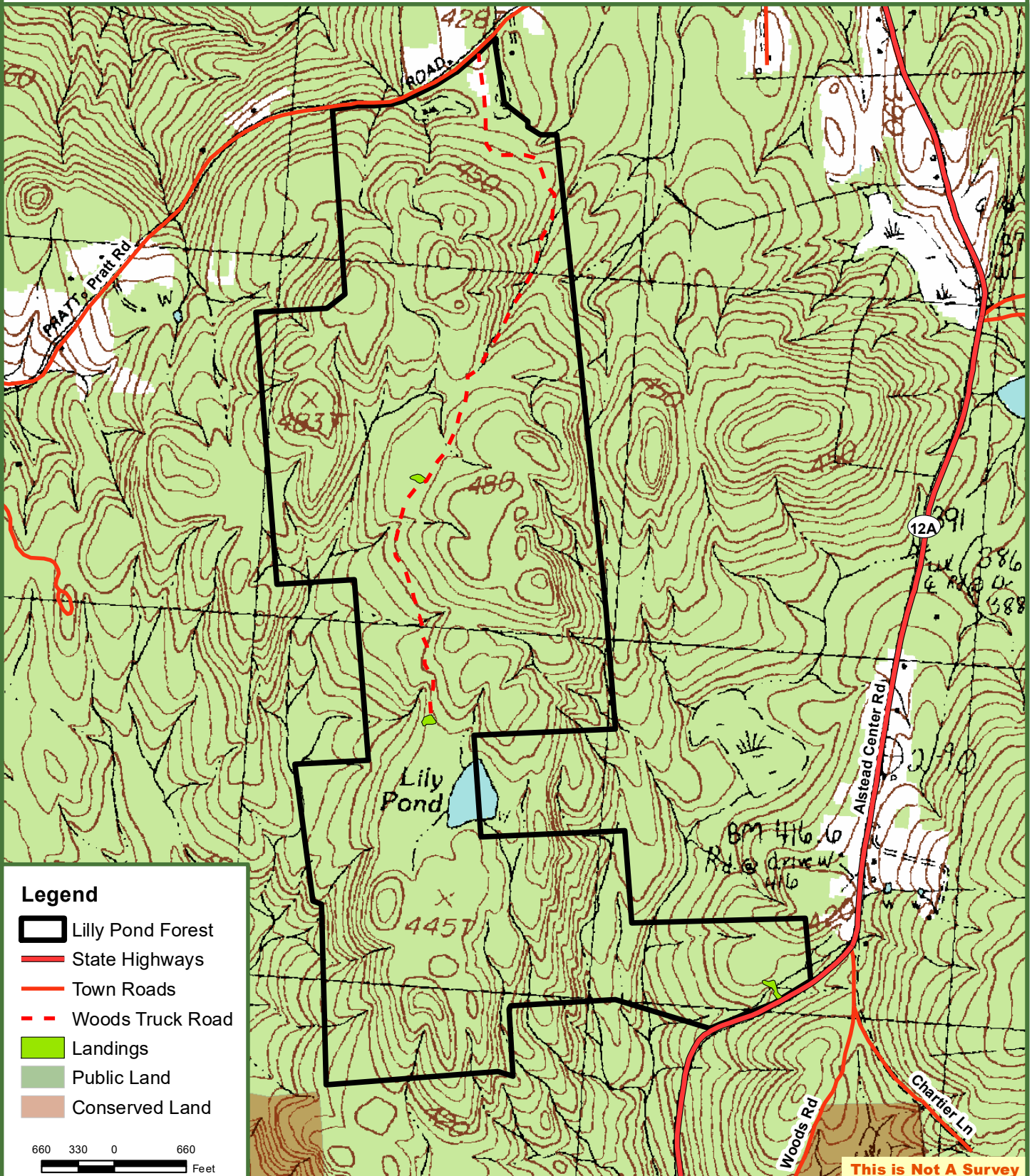


Lily Pond Forest

505 Tax Acres
Alstead, Cheshire County, NH



**Fountains
Land**
AN F&W COMPANY



Legend

- Lily Pond Forest
- State Highways
- Town Roads
- Woods Truck Road
- Landings
- Public Land
- Conserved Land

660 330 0 660
Feet

This is Not A Survey

Map produced from the best available information including town tax maps, hand held GPS data, aerial photography and reference information obtained from publicly available GIS sources, and the owner. Boundary lines portrayed on this map are approximate and could be different than the actual location of boundaries found in the field.