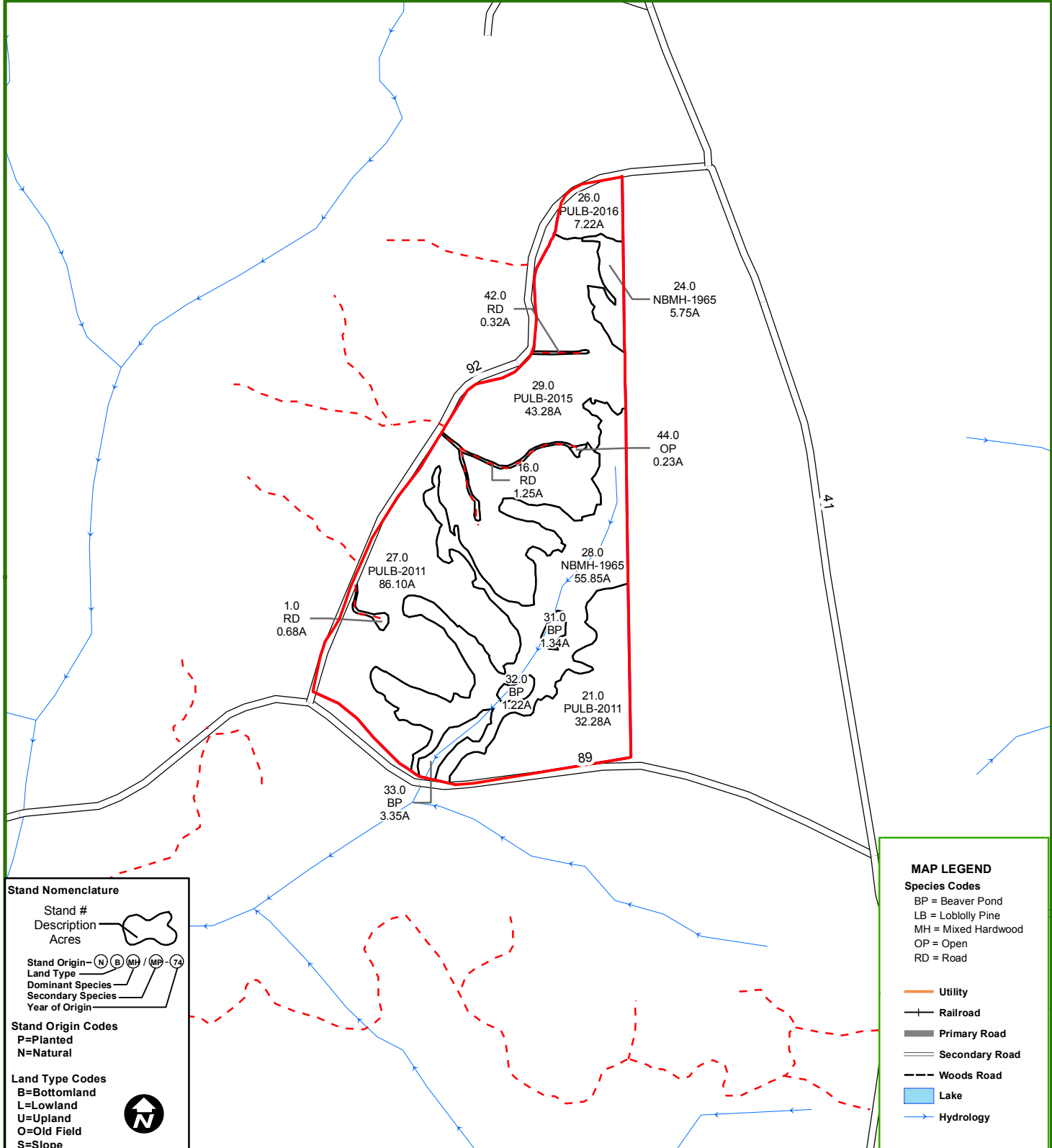


High Point Pinelands

239 +/- Acres
Webster County, GA



Stand Nomenclature

Stand #
Description
Acres

Stand Origin—(N) (B) (MH) (MP) (T)

Land Type
Dominant Species
Secondary Species
Year of Origin

Stand Origin Codes
P=Planted
N=Natural

Land Type Codes
B=Bottomland
L=Lowland
U=Upland
O=Old Field
S=Slope

MAP LEGEND

Species Codes
BP = Beaver Pond
LB = Loblolly Pine
MH = Mixed Hardwood
OP = Open
RD = Road

Utility
Railroad
Primary Road
Secondary Road
Woods Road
Lake
Hydrology

