



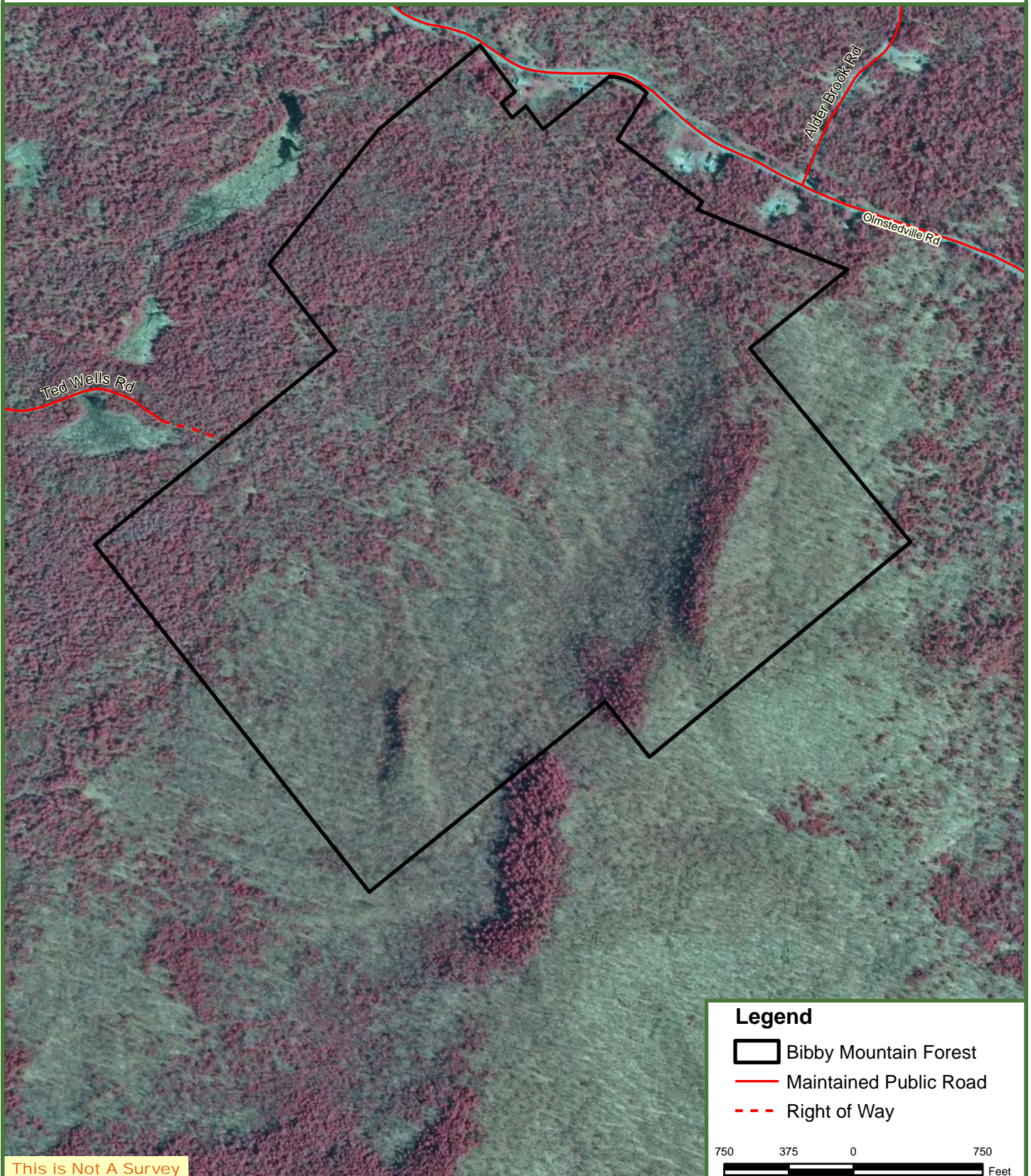
Bibby Mountain Forest

278 Tax Acres




Chester, Warren County, NY

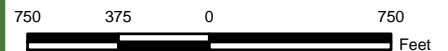


**Fountains
Land**
AN F&W COMPANY



Legend

-  Bibby Mountain Forest
-  Maintained Public Road
-  Right of Way



This is Not A Survey

Map produced from the best available information including town tax maps, hand held GPS data, aerial photography and reference information obtained from publicly available GIS sources, and the owner. Boundary lines portrayed on this map are approximate and could be different than the actual location of boundaries found in the field.